

eBUS Button Panels

AV SYSTEM CONTROL INTERFACES

eBUS

The Easiest Way to Deploy
and Expand AV System Control

- ▶ Fully customizable button panels integrate easily with an Extron Pro Series control system
- ▶ Single-cable connection enables easy system expansion and greater design options
- ▶ Use a single button panel or multiple button panels, depending on your application needs
- ▶ Backlit buttons provide easy operation in low-light environments
- ▶ Compatible with all IPCP Pro control processors



Extron Electronics
INTERFACING, SWITCHING AND CONTROL

Introduction



eBUS Button Panels

Extron's eBUS button panels are customizable, integration-friendly AV system control interfaces designed for use with Extron IPCP Pro control processors. eBUS button panels come in industry-standard form factors and multiple units may be linked together by a single cable that carries both power and communication. Buttons can be easily customized using Extron Button Label Generator software or by using the online Custom Button Builder application.



eBUS Technology

Extron's integration-friendly

eBUS technology is based on a unique digital bus architecture that allows for easy control system expansion, greater design options, and future upgrades. As with our TouchLink Pro touchpanels, eBUS button panels are designed for use with any Extron IPCP Pro Series control processor. A single eBUS button panel can be used as the AV control interface for a smaller system or multiple button panels and touchpanels may be combined when a more elaborate control system is required. Powered and non-powered eBUS distribution hubs are available to accommodate a variety of system design topologies.

Easy Expansion and Upgrades

Presentation environments benefit from AV control systems that can be easily modified to fit the evolving demands of their applications. eBUS button panels streamline system expansion and upgrades by using single cable connections and sharing the powerful resources of one IPCP Pro Series control processor. Up to eight eBUS button panels can be connected to one IPCP Pro control processor when configured with Global Configurator Plus or Professional. For convenient control in systems that are designed with pushbutton AV control in some locations and sophisticated interactive control in others, eBUS button panels work with TouchLink Pro touchpanels and share the same IPCP Pro control processor.

Mounting Options and Form Factors

eBUS button panels come in a broad variety of industry-standard form factors that provide worldwide compatibility. Button panels can be mounted on any flat surface, including walls, lecterns, desks, or even in a table with our EBP 1200C. Button panels are available in decorator-style, EU, MK, and furniture-mountable form factors. For applications worldwide, the EU models are compatible with Flex55 modules, mounting kits, and enclosures.

Supported Control Products

IPCP Pro 250	IPCP Pro 555
IPCP Pro 255	IN1608 IPCP
IPCP Pro 350	DTP CrossPoint 84 IPCP
IPCP Pro 350DR	DTP CrossPoint 82 4K IPCP
IPCP Pro 355DR	DTP CrossPoint 84 4K IPCP
IPCP Pro 360	DTP CrossPoint 86 4K IPCP
IPCP Pro 550	DTP CrossPoint 108 4K IPCP

Extron Driver Library

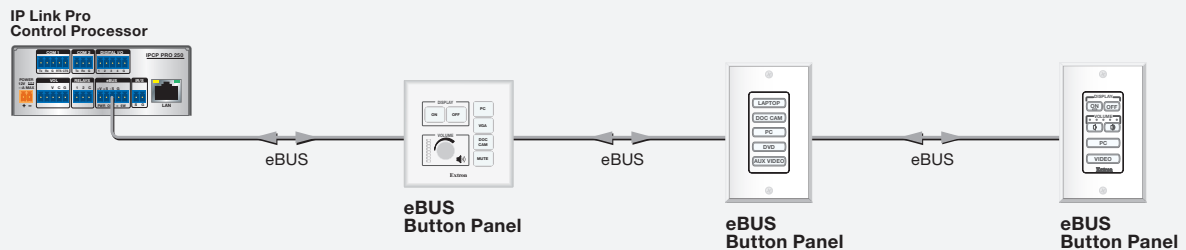
Extron maintains a library of thousands of Ethernet, serial, and IR drivers that allow our products to control a broad variety of display and source devices. Download individual drivers or as a driver package in a single, executable file that can be installed like any software application. We also have an extensive library of Extron Certified Drivers, which have undergone thorough, in-house testing by Extron staff.

eBUS Topologies

All eBUS button panels feature two eBUS ports for easy system expansion and upgrades. Since eBUS button panels share one control processor and are connected with a single cable, they can be arranged in various configurations or topologies that best suit your application and environment. Total cable distance in any configuration must not exceed 1,000 feet. The following designs represent the most popular eBUS system topologies:

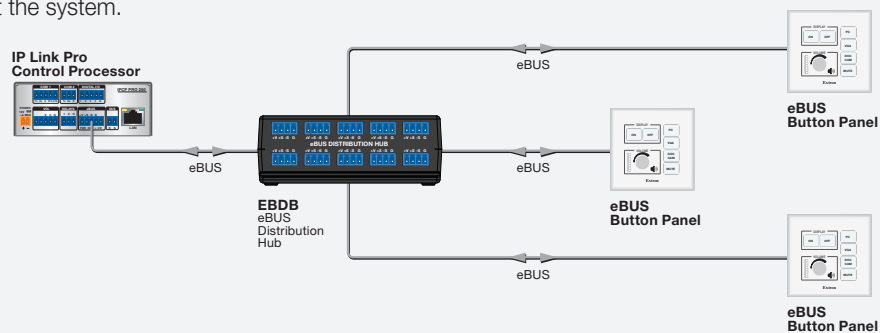
DAISY CHAIN

In a daisy chain topology, one of the eBUS ports is used for input from the previous button panel or control processor in the chain and the other is used for output to the next button panel. In this simple configuration, the IPCP Pro control processor can be mounted out of the way, at the terminal end of the chain.



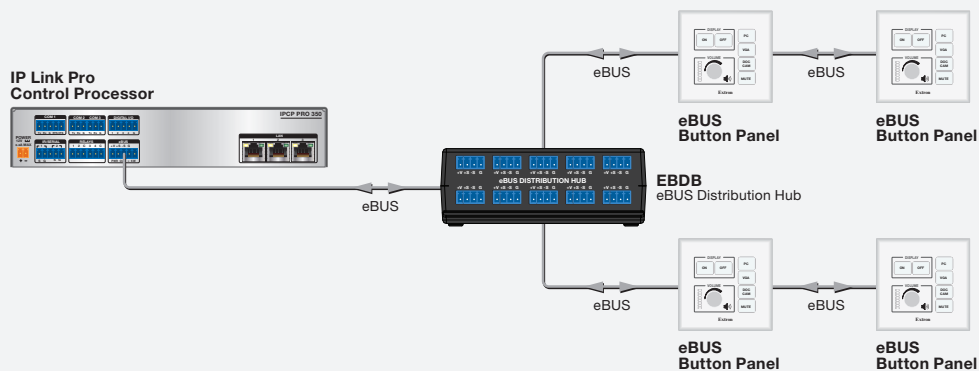
STAR

A star topology can be achieved by using either an Extron EBDB or a PS 1220EB eBUS distribution hub. A single cable connects the IPCP Pro control processor to the eBUS distribution hub. From the hub, up to eight eBUS button panels can be connected and arranged throughout the system.



HYBRID

A hybrid topology combines configuration elements from the daisy chain and star designs.



EBP 100 and EBP 200 Overview

Discrete On and Off Buttons

Control display power and simplify system operations

Wallplate colors

Black and white wallplates included

Customizable Buttons

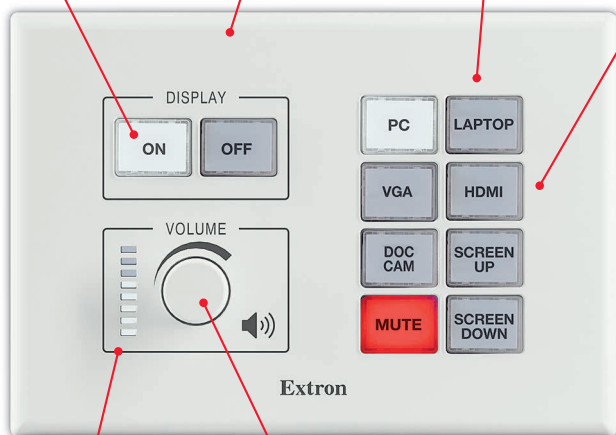
Provide intuitive control for source selection or other system functions

Dual-color backlit buttons

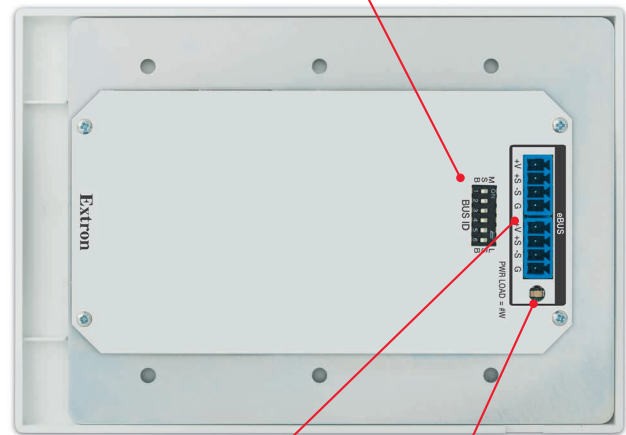
10 Dual color, backlit buttons can be labeled in the field for easy identification

DIP switches

DIP switches are used to set unique eBUS device addresses



EBP 200



LED indicators

Visual level indicators take the guesswork out of volume control

Volume control

Knob for smooth, precise volume adjustment

Mounting options

Compatible with three-gang US electrical box or included mud ring

eBUS ports

Two eBUS ports for connection to an IPCP Pro control processor or combining with other eBUS devices

Diagnostic LED

eBUS diagnostic LED provides connection status for troubleshooting

The Extron EBP 100 and EBP 200 eBUS Button Panels are fully-customizable user interfaces designed for use with Extron eBUS-enabled control systems. These easy-to-use interfaces connect to IPCP Pro control processors to perform a wide variety of AV functions, such as display On/Off, input switching, volume control, and much more. Their backlit buttons are ideal for easy operation in low-light environments and volume control knobs provide smooth, precise volume adjustments. Two eBUS ports are available for easy system expansion. eBUS button panels are linked to the control processor and to each other using a single cable that carries both power and communication.

Features

- ▶ Fully customizable button panel integrates easily with an Extron Pro Series control system
- ▶ Dual-color, customizable, backlit buttons
- ▶ Two eBUS® ports allow for quick system expansion and upgrades
- ▶ Compatible with all Extron IPCP Pro control processors
- ▶ Use a single button panel or combine multiple button panels to accommodate a broad variety of system designs
- ▶ eBUS button panels connect to the control processor and each other using a single cable that carries both power and communication
- ▶ DIP switches are used to set unique eBUS device addresses and minimize setup time
- ▶ Volume knob with LEDs for visual feedback
- ▶ eBUS diagnostic LED provides connection status for troubleshooting
- ▶ Removable button caps make changing labels in the field easy – Label each button to clearly indicate its function. Labels can be quickly changed and don't require programming or engraving.
- ▶ Discrete On and Off buttons for display power – Simplify system operations and eliminates the need for an external display remote.
- ▶ Removable captive screw connectors allow for quick installation
- ▶ Reset button – Allows firmware to be reset to original factory settings.
- ▶ Section 508 Compliant – Meets or exceeds accessibility standards for Electronic Information Technology.
- ▶ Support the Extron Control App
- ▶ Include black and white faceplates and mud rings



EBP 100

eBUS Button Panel with 6 Buttons - US 2-Gang

- Fully customizable button panel integrates easily with an Extron Pro Series control system
- Six dual-color, customizable, backlit buttons
- Volume control knob with LEDs for visual feedback
- Two eBUS ports allow for quick system expansion and upgrades
- Compatible with all Extron IPCP Pro control processors
- Use a single button panel or combine multiple button panels to accommodate a broad variety of system designs
- DIP switches are used to set unique eBUS device addresses and minimize setup time
- eBUS diagnostic LED provides connection status for troubleshooting
- Removable button caps make changing labels in the field easy
- Discrete On and Off buttons for display power
- Removable captive screw connectors allow for quick installation
- Section 508 Compliant

Model

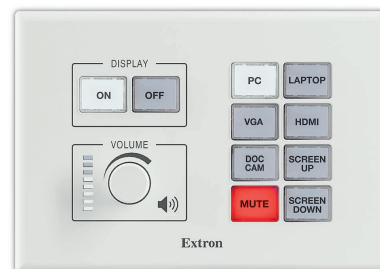
EBP 100

Version Description

2-Gang, Black and White, 6 Button

Part Number

60-1388-01



EBP 200

eBUS Button Panel with 10 Buttons - US 3-Gang

- Fully customizable button panel integrates easily with an Extron Pro Series control system
- Ten dual-color, customizable, backlit buttons
- Volume control knob with LEDs for visual feedback
- Two eBUS ports allow for quick system expansion and upgrades
- Compatible with all Extron IPCP Pro control processors
- Use a single button panel or combine multiple button panels to accommodate a broad variety of system designs
- DIP switches are used to set unique eBUS device addresses and minimize setup time
- eBUS diagnostic LED provides connection status for troubleshooting
- Removable button caps make changing labels in the field easy
- Discrete On and Off buttons for display power
- Removable captive screw connectors allow for quick installation
- Section 508 Compliant

Model

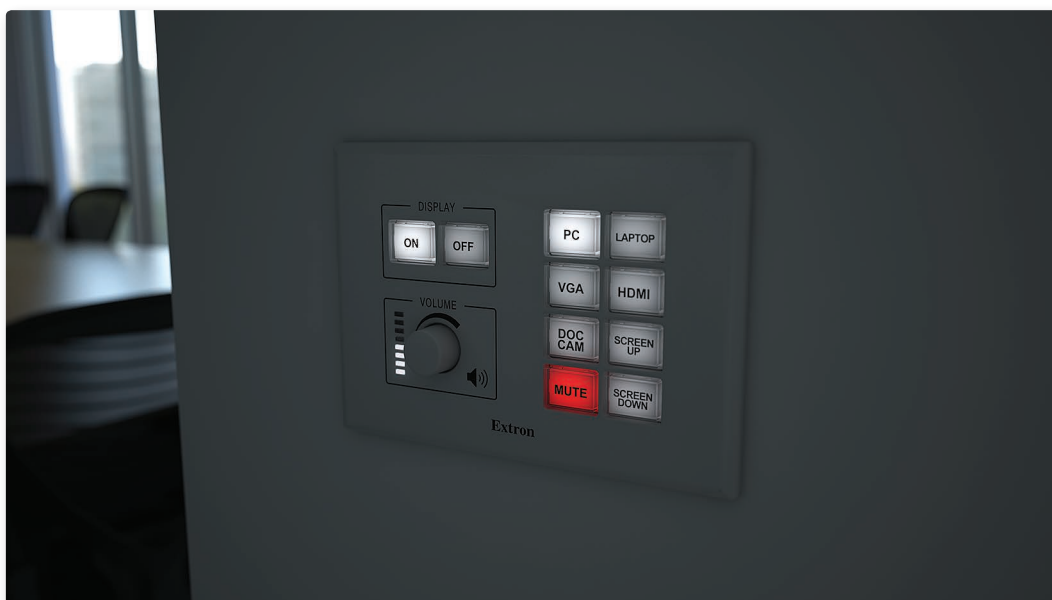
EBP 200

Version Description

3-Gang, Black and White, 10 Button

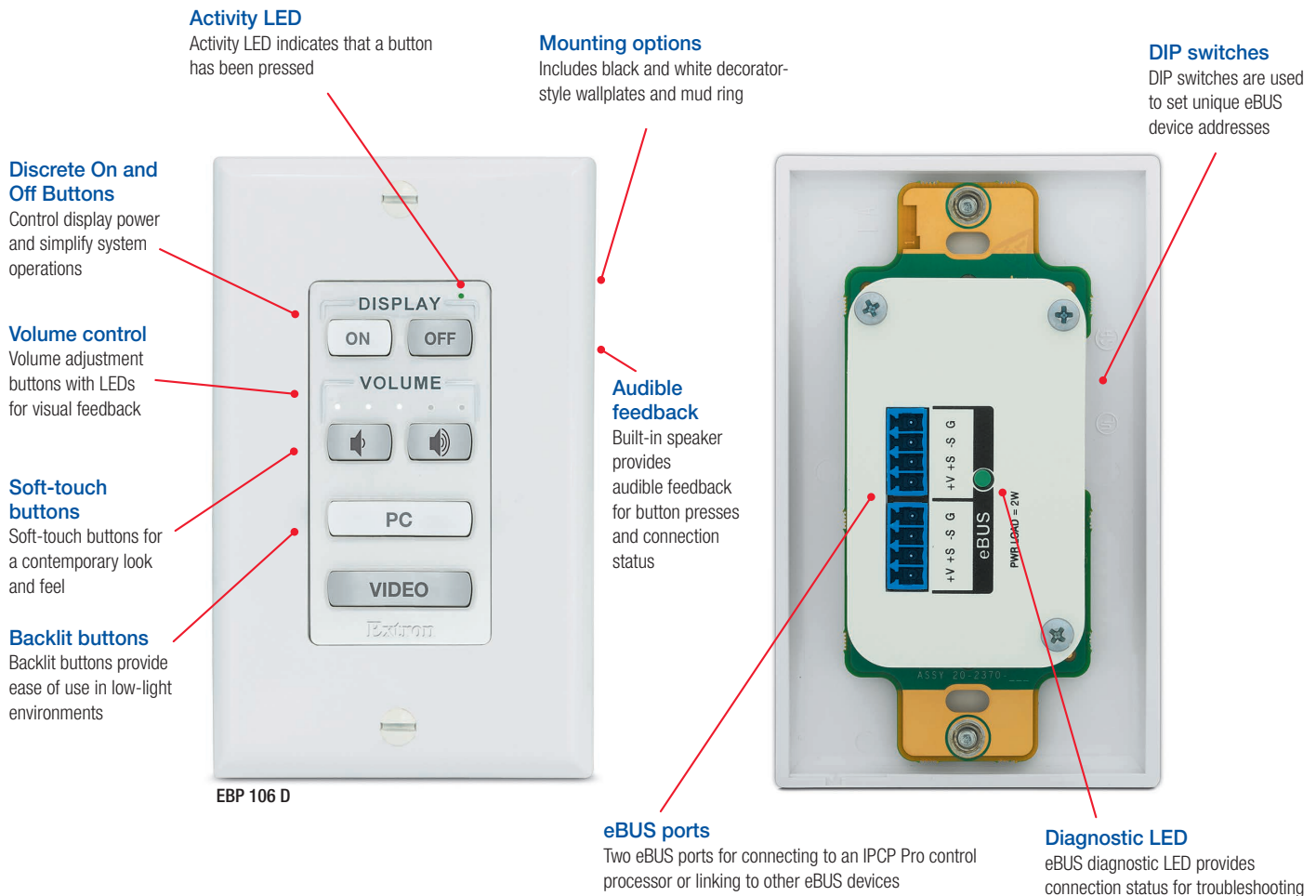
Part Number

60-1389-01



Backlit buttons provide easy operation in low-light environments

eBUS Button Panel Overview



Extron eBUS button panels are fully-customizable AV system control interfaces for Extron eBUS-enabled control systems. These easy-to-use control panels connect to IPCP Pro control processors to perform a wide variety of AV system functions such as display On/Off, input switching, volume control, and much more. The customizable, soft touch buttons are backlit for easy operation in low-light environments. Two eBUS ports are available for easy system expansion. eBUS button panels are linked to the control processor and to each other using a single cable that carries both power and communication.

Features

- ▶ Fully customizable button panel integrates easily with an Extron Pro Series control system
- ▶ Backlit, soft-touch buttons that can be customized using Extron's Custom Button Builder
- ▶ Two eBUS® ports allow for quick system expansion and upgrades

- ▶ Compatible with all Extron IPCP Pro control processors
- ▶ Use a single button panel or combine multiple button panels to accommodate a broad variety of system designs
- ▶ eBUS button panels connect to the control processor and each other using a single cable that carries both power and communication
- ▶ DIP switches are used to set unique eBUS device addresses and minimize setup time
- ▶ eBUS diagnostic LED provides connection status for troubleshooting
- ▶ Built-in speaker provides audible feedback for button presses and connection status
- ▶ Support the Extron Control App

eBUS Button Panels – Decorator-Style



EBP 105 D

eBUS Button Panel with 5 Buttons - Decorator-Style

- Fully customizable button panel integrates easily with an Extron Pro Series control system
- Five backlit, soft-touch buttons that can be customized using Extron's Custom Button Builder
- Two eBUS ports allow for quick system expansion and upgrades
- Compatible with all Extron IPCP Pro control processors
- Use a single button panel or combine multiple button panels to accommodate a broad variety of system designs

Model	Version Description	Part Number
EBP 105 D	Decorator-Style, Black and White, 5 Button	60-1085-01



EBP 106 D



EBP 106P D

EBP 106 D & EBP 106P D

eBUS Button Panels with 6 Buttons - Decorator-Style

- Fully customizable button panel integrates easily with an Extron Pro Series control system
- Six backlit, soft-touch buttons that can be customized using Extron's Custom Button Builder
- Two eBUS ports allow for quick system expansion and upgrades
- Compatible with all Extron IPCP Pro control processors
- Use a single button panel or combine multiple button panels to accommodate a broad variety of system designs

Model	Version Description	Part Number
EBP 106 D	Decorator-Style, Black and White, 6 Button	60-1084-01
EBP 106P D	Decorator-Style, Black and White, 6 Button	60-1093-01



EBP 108 D

eBUS Button Panel with 8 Buttons - Decorator-Style

- Fully customizable button panel integrates easily with an Extron Pro Series control system
- Eight backlit, soft-touch buttons that can be customized using Extron's Custom Button Builder
- Two eBUS ports allow for quick system expansion and upgrades
- Compatible with all Extron IPCP Pro control processors
- Use a single button panel or combine multiple button panels to accommodate a broad variety of system designs

Model	Version Description	Part Number
EBP 108 D	Decorator-Style, Black and White, 8 Button	60-1189-01



EBP 110 D

eBUS Button Panel with 10 Buttons - Decorator-Style

- Fully customizable button panel integrates easily with an Extron Pro Series control system
- Ten backlit, soft-touch buttons that can be customized using Extron's Custom Button Builder
- Two eBUS ports allow for quick system expansion and upgrades
- Compatible with all Extron IPCP Pro control processors
- Use a single button panel or combine multiple button panels to accommodate a broad variety of system designs

Model	Version Description	Part Number
EBP 110 D	Decorator-Style, Black and White, 10 Button	60-1190-01

eBUS Button Panels – Decorator-Style



EBP VC1 D

eBUS Button Panel with Volume Control - Decorator-Style

- Fully customizable button panel integrates easily with an Extron Pro Series control system
- Six backlit, soft-touch buttons that can be customized using Extron's Custom Button Builder
- Two eBUS ports allow for quick system expansion and upgrades
- Compatible with all Extron IPCP Pro control processors
- Use a single button panel or combine multiple button panels to accommodate a broad variety of system designs
- eBUS button panels connect to the control processor and each other using a single cable that carries both power and communication
- Volume control knob with LEDs for visual feedback



EBP VC2 D

eBUS Button Panel with Dual Volume Control - Decorator-Style

- Fully customizable button panel integrates easily with an Extron Pro Series control system
- Six backlit, soft-touch buttons that can be customized using Extron's Custom Button Builder
- Two eBUS ports allow for quick system expansion and upgrades
- Compatible with all Extron IPCP Pro control processors
- Use a single button panel or combine multiple button panels to accommodate a broad variety of system designs
- eBUS button panels connect to the control processor and each other using a single cable that carries both power and communication
- Volume adjustment and mute buttons with LED level indication

Model	Version Description	Part Number
EBP VC1 D	Decorator-Style, Black and White, Vol Control	60-1184-01

Model	Version Description	Part Number
EBP VC2 D	Decorator-Style, Black and White, Dual Vol	60-1094-01



EBP NAV D

eBUS Button Panel with Transport Control - Decorator-Style

- Fully customizable button panel integrates easily with an Extron Pro Series control system
- Fourteen backlit, soft-touch buttons provide easy, intuitive control of Blu-ray and DVD players, streaming video, and other media sources
- Two eBUS® ports allow for quick system expansion and upgrades
- Compatible with all Extron IPCP Pro control processors
- Use a single button panel or combine multiple button panels to accommodate a broad variety of system designs
- eBUS button panels connect to the control processor and each other using a single cable that carries both power and communication

Model	Version Description	Part Number
EBP NAV D	Decorator-Style, Black and White, Transport Control	60-1086-01



EBP 111 D

eBUS Button Panel with 11 Buttons - Decorator-Style 2-Gang

- Fully customizable button panel integrates easily with an Extron Pro Series control system
- Eleven backlit, soft-touch buttons that can be customized using Extron's Custom Button Builder
- Two eBUS ports allow for quick system expansion and upgrades
- Compatible with all Extron IPCP Pro control processors
- Use a single button panel or combine multiple button panels to accommodate a broad variety of system designs
- eBUS button panels connect to the control processor and each other using a single cable that carries both power and communication

Model	Version Description	Part Number
EBP 111 D	Decorator-Style, Black and White, 11 Button	60-1087-01

eBUS Button Panels – Flex55 & EU

FLEX55



EBP 105 EU

eBUS Button Panel with 5 Buttons - Flex55 and EU

- Fully customizable button panel integrates easily with an Extron Pro Series control system
- Five backlit, soft-touch buttons that can be customized using Extron's Custom Button Builder
- Two eBUS® ports allow for quick system expansion and upgrades
- Compatible with all Extron IPCP Pro control processors
- Use a single button panel or combine multiple button panels to accommodate a broad variety of system designs
- eBUS button panels connect to the control processor and each other using a single cable that carries both power and communication

Model	Version Description	Part Number
EBP 105 EU	Flex55 and EU, Black and White, 5 Button	60-1085-31



EBP 105P EU

eBUS Button Panel with 5 Buttons - Flex55 and EU

- Fully customizable button panel integrates easily with an Extron Pro Series control system
- Five backlit, soft-touch buttons that can be customized using Extron's Custom Button Builder
- Two eBUS® ports allow for quick system expansion and upgrades
- Compatible with all Extron IPCP Pro control processors
- Use a single button panel or combine multiple button panels to accommodate a broad variety of system designs
- eBUS button panels connect to the control processor and each other using a single cable that carries both power and communication

Model	Version Description	Part Number
EBP 105P EU	Flex55 and EU, Black and White, 5 Button	60-1093-31



EBP 106 EU

eBUS Button Panel with 6 Buttons - Flex55 and EU

- Fully customizable button panel integrates easily with an Extron Pro Series control system
- Six backlit, soft-touch buttons that can be customized using Extron's Custom Button Builder
- Two eBUS® ports allow for quick system expansion and upgrades
- Compatible with all Extron IPCP Pro control processors
- Use a single button panel or combine multiple button panels to accommodate a broad variety of system designs
- eBUS button panels connect to the control processor and each other using a single cable that carries both power and communication

Model	Version Description	Part Number
EBP 106 EU	Flex55 and EU, Black and White, 6 Button	60-1084-31



EBP 108 EU

eBUS Button Panel with 8 Buttons - Flex55 and EU

- Fully customizable button panel integrates easily with an Extron Pro Series control system
- Eight backlit, soft-touch buttons that can be customized using Extron's Custom Button Builder
- Two eBUS® ports allow for quick system expansion and upgrades
- Compatible with all Extron IPCP Pro control processors
- Use a single button panel or combine multiple button panels to accommodate a broad variety of system designs
- eBUS button panels connect to the control processor and each other using a single cable that carries both power and communication

Model	Version Description	Part Number
EBP 108 EU	Flex55 and EU, Black and White, 8 Button	60-1189-31

eBUS Button Panels – Flex55 & EU

FLEX55



EBP 110 EU

eBUS Button Panel with 10 Buttons - Flex55 and EU

- Fully customizable button panel integrates easily with an Extron Pro Series control system
- Ten backlit, soft-touch buttons that can be customized using Extron's Custom Button Builder
- Two eBUS® ports allow for quick system expansion and upgrades
- Compatible with all Extron IPCP Pro control processors
- Use a single button panel or combine multiple button panels to accommodate a broad variety of system designs
- eBUS button panels connect to the control processor and each other using a single cable that carries both power and communication



EBP VC1 EU

eBUS Button Panel with Volume Control - Flex55 and EU

- Fully customizable button panel integrates easily with an Extron Pro Series control system
- One backlit, soft-touch button that can be customized using Extron's Custom Button Builder
- Two eBUS® ports allow for quick system expansion and upgrades
- Compatible with all Extron IPCP Pro control processors
- Use a single button panel or combine multiple button panels to accommodate a broad variety of system designs
- eBUS button panels connect to the control processor and each other using a single cable that carries both power and communication

Model	Version Description	Part Number
EBP 110 EU	Flex55 and EU, Black and White, 10 button	60-1190-31

Model	Version Description	Part Number
EBP VC1 EU	Flex55 and EU, Black and White, Vol Control	60-1184-31



EBP VC2 EU

eBUS Button Panel with Dual Volume Control - Flex55 and EU

- Fully customizable button panel integrates easily with an Extron Pro Series control system
- Six backlit, soft-touch buttons that can be customized using Extron's Custom Button Builder
- Two eBUS® ports allow for quick system expansion and upgrades
- Compatible with all Extron IPCP Pro control processors
- Use a single button panel or combine multiple button panels to accommodate a broad variety of system designs
- eBUS button panels connect to the control processor and each other using a single cable that carries both power and communication



EBP NAV EU

eBUS Button Panel with Transport Control - Flex55 and EU

- Fully customizable button panel integrates easily with an Extron Pro Series control system
- Fourteen backlit, soft-touch buttons provide easy, intuitive control of Blu-ray and DVD players, streaming video, and other media sources
- Two eBUS® ports allow for quick system expansion and upgrades
- Compatible with all Extron IPCP Pro control processors
- Use a single button panel or combine multiple button panels to accommodate a broad variety of system designs
- eBUS button panels connect to the control processor and each other using a single cable that carries both power and communication

Model	Version Description	Part Number
EBP VC2 EU	Flex55 and EU, Black and White, Dual Vol	60-1094-31

Model	Version Description	Part Number
EBP NAV EU	Flex55 and EU, Black and White, Transport Control	60-1086-31

eBUS Button Panels - MK Wall Frames

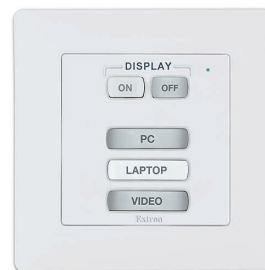


EBP 105 MK

eBUS Button Panel with 5 Buttons - MK

- Fully customizable button panel integrates easily with an Extron Pro Series control system
- Five backlit, soft-touch buttons that can be customized using Extron's Custom Button Builder
- Two eBUS® ports allow for quick system expansion and upgrades
- Compatible with all Extron IPCP Pro control processors
- Use a single button panel or combine multiple button panels to accommodate a broad variety of system designs
- eBUS button panels connect to the control processor and each other using a single cable that carries both power and communication

Model	Version Description	Part Number
EBP 105 MK	MK Mount, White, 5 Button	60-1085-23



EBP 105P MK

eBUS Button Panel with 5 Buttons - MK

- Fully customizable button panel integrates easily with an Extron Pro Series control system
- Five backlit, soft-touch buttons that can be customized using Extron's Custom Button Builder
- Two eBUS® ports allow for quick system expansion and upgrades
- Compatible with all Extron IPCP Pro control processors
- Use a single button panel or combine multiple button panels to accommodate a broad variety of system designs
- eBUS button panels connect to the control processor and each other using a single cable that carries both power and communication

Model	Version Description	Part Number
EBP 105P MK	MK Mount, White, 5 Button	60-1093-23



EBP 106 MK

eBUS Button Panel with 6 Buttons - MK

- Fully customizable button panel integrates easily with an Extron Pro Series control system
- Six backlit, soft-touch buttons that can be customized using Extron's Custom Button Builder
- Two eBUS® ports allow for quick system expansion and upgrades
- Compatible with all Extron IPCP Pro control processors
- Use a single button panel or combine multiple button panels to accommodate a broad variety of system designs
- eBUS button panels connect to the control processor and each other using a single cable that carries both power and communication

Model	Version Description	Part Number
EBP 106 MK	MK Mount, White, 6 Button	60-1084-23



EBP 108 MK

eBUS Button Panel with 8 Buttons - MK

- Fully customizable button panel integrates easily with an Extron Pro Series control system
- Eight backlit, soft-touch buttons that can be customized using Extron's Custom Button Builder
- Two eBUS® ports allow for quick system expansion and upgrades
- Compatible with all Extron IPCP Pro control processors
- Use a single button panel or combine multiple button panels to accommodate a broad variety of system designs
- eBUS button panels connect to the control processor and each other using a single cable that carries both power and communication

Model	Version Description	Part Number
EBP 108 MK	MK Mount, White, 8 Button	60-1189-23

eBUS Button Panels - MK Wall Frames



EBP 110 MK

eBUS Button Panel with 10 Buttons - MK

- Fully customizable button panel integrates easily with an Extron Pro Series control system
- Ten backlit, soft-touch buttons that can be customized using Extron's Custom Button Builder
- Two eBUS® ports allow for quick system expansion and upgrades
- Compatible with all Extron IPCP Pro control processors
- Use a single button panel or combine multiple button panels to accommodate a broad variety of system designs
- eBUS button panels connect to the control processor and each other using a single cable that carries both power and communication

Model	Version Description	Part Number
EBP 110 MK	MK Mount, White, 10 Button	60-1190-23



EBP VC1 MK

eBUS Button Panel with Volume Control - MK

- Fully customizable button panel integrates easily with an Extron Pro Series control system
- One backlit, soft-touch button that can be customized using Extron's Custom Button Builder
- Two eBUS® ports allow for quick system expansion and upgrades
- Compatible with all Extron IPCP Pro control processors
- Use a single button panel or combine multiple button panels to accommodate a broad variety of system designs
- eBUS button panels connect to the control processor and each other using a single cable that carries both power and communication

Model	Version Description	Part Number
EBP VC1 MK	MK Mount, White, Vol Control	60-1184-23

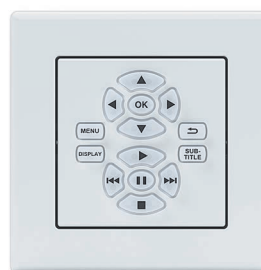


EBP VC2 MK

eBUS Button Panel with Dual Volume Control - MK

- Fully customizable button panel integrates easily with an Extron Pro Series control system
- One backlit, soft-touch button that can be customized using Extron's Custom Button Builder
- Two eBUS® ports allow for quick system expansion and upgrades
- Compatible with all Extron IPCP Pro control processors
- Use a single button panel or combine multiple button panels to accommodate a broad variety of system designs
- eBUS button panels connect to the control processor and each other using a single cable that carries both power and communication

Model	Version Description	Part Number
EBP VC2 MK	MK Mount, White, Dual Vol	60-1094-23



EBP NAV MK

eBUS Button Panel with Transport Control - MK

- Fully customizable button panel integrates easily with an Extron Pro Series control system
- Fourteen backlit, soft-touch buttons provide easy, intuitive control of Blu-ray and DVD players, streaming video, and other media sources
- Two eBUS® ports allow for quick system expansion and upgrades
- Compatible with all Extron IPCP Pro control processors
- Use a single button panel or combine multiple button panels to accommodate a broad variety of system designs
- eBUS button panels connect to the control processor and each other using a single cable that carries both power and communication

Model	Version Description	Part Number
EBP NAV MK	MK Mount, White, Transport Control	60-1086-23

EBP 1200C Overview

Patented modular design

For fast assembly and serviceability, AV connectivity can be installed or serviced from the top of the enclosure, after it is installed.

Supports a wide range of cable management applications

Cable Cubby Series/2 cable access enclosures offer a variety of sizes and configurations to support your cable management application.

Ten backlit, soft-touch buttons

Easily customized using Extron's Custom Button Builder

Low profile lid with full width cable pass-through

Provides convenient access to AV cables and AC power, whether open or closed.

Choice of AC-only or AC+USB Power Modules

AC-only or AC+USB Power Modules are available for the US, Europe, and other major world markets. The available AC+USB modules feature two 5 VDC USB power outlets and up to 2.1 A / 10.5 watts of power for charging mobile devices.

AV connectivity

Enclosures include brackets for mounting Retractor or Retractor XL cable retraction modules, AAP - Architectural Adapter Plates, or AV cables to the left or right of the AC module. Optional bracket kits allow the AC power module to be mounted in the center of the enclosure for additional flexibility in configuring AV connectivity.

The Extron EBP 1200C eBUS button panel combines intuitive AV control, connectivity, and power all in one, furniture-mountable device. The easy-to-use control panel works with all eBUS-enabled control systems and connects to an IPCP Pro control processor to perform a wide variety of AV system functions such as display On/Off, input switching, volume control, and much more.

The flip-up button panel has ten customizable, soft-touch buttons that are backlit for easy operation in low-light environments. The cable access enclosure supports up to three single-space AAPs and up to three Extron Retractors. The EBP 1200C enables integrators to deploy a contemporary, furniture-mountable eBUS button panel with cable management and easy access to AV connectivity and power.

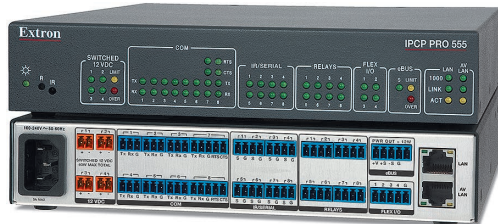
Extron's integration-friendly eBUS technology is based on a unique digital bus architecture that allows for easy control system expansion, greater design options, and future upgrades. As with our TouchLink Pro touchpanels, eBUS button panels are designed for use with any Extron IPCP Pro Series control processor. A single eBUS button panel can be used as the AV control interface for a smaller system or multiple button panels and touchpanels may be combined when a more elaborate control system is required.

Features

- ▶ Fully customizable button panel integrates easily with an Extron Pro Series control system
- ▶ Two eBUS® ports allow for quick system expansion and upgrades
- ▶ Compatible with all Extron IPCP Pro control processors
- ▶ Combine multiple eBUS panels to accommodate a broad variety of system designs
- ▶ eBUS button panels connect to the control processor and each other using a single cable that carries both power and communication
- ▶ Cable Cubby 1200 design offers easy access to AV, data, and power connections
 - Accommodates one Series/2 AC 100 Series or AC+USB 200 Series Power Module, plus three Retractors, eight AV cables, or three AAP - Architectural Adapter Plates
 - Slim enclosure is ideal for conference tables, desks or study carrels, lecterns, and other work spaces where space is at a premium
 - Patented modular design for fast assembly and serviceability
 - AC Power and AC+USB Power Modules are available for US, Europe, and other major world markets

IPCP Pro Control Processors

IPCP Pro control processors are designed to work together with eBUS button panels and other Extron AV system control devices for AV system and room control. These control processors enable almost any AV device to be controlled, monitored, and accessed from a Local Area Network, Wide Area Network, or the Internet.



IPCP Pro 555

IP Link Pro Control Processor

- Supports TouchLink® Pro touchpanels and eBUS® button panels
- AV LAN port allows AV devices to be isolated from the corporate network
- Supports secure industry standard communications protocols
- Supports LinkLicense®
- Six bidirectional RS-232 serial ports with software handshaking
- Two bidirectional RS-232/RS-422/RS-485 serial ports with hardware and software handshaking



IPCP Pro 550

IP Link Pro Control Processor

- Supports TouchLink® Pro touchpanels and eBUS® button panels
- Supports secure industry standard communications protocols
- Supports LinkLicense®
- Six bidirectional RS-232 serial ports with software handshaking
- Two bidirectional RS-232/RS-422/RS-485 serial ports with hardware and software handshaking

Model	Version Description	Part Number
IPCP Pro 555	IP Link Pro Control Processor	60-1434-01
IPCP Pro 555	IP Link Pro Control Proc., LL UI Upgrade	60-1434-01A

Model	Version Description	Part Number
IPCP Pro 550	IP Link Pro Control Processor	60-1418-01
IPCP Pro 550	IP Link Pro Control Proc., LL UI Upgrade	60-1418-01A



IPCP Pro 360

IP Link Pro Control Processor

- Supports TouchLink® Pro touchpanels and eBUS® button panels
- Three AV LAN ports allow AV devices to be isolated from the corporate network
- AV LAN ports provide PoE+ to external devices.
- Supports secure industry standard communications protocols
- Supports LinkLicense®
- Two bidirectional RS-232 serial ports with software handshaking
- One bidirectional RS-232/RS-422/RS-485 serial port with hardware and software handshaking



IPCP Pro 350

IP Link Pro Control Processor

- Supports TouchLink® Pro touchpanels and eBUS® button panels
- Supports secure industry standard communications protocols
- Supports LinkLicense®
- Two bidirectional RS-232 serial ports with software handshaking
- One bidirectional RS-232/RS-422/RS-485 serial port with hardware and software handshaking

Model	Version Description	Part Number
IPCP Pro 360	IP Link Pro Control Processor	60-1432-01
IPCP Pro 360	IP Link Pro Control Proc., LL UI Upgrade	60-1432-01A

Model	Version Description	Part Number
IPCP Pro 350	IP Link Pro Control Processor	60-1417-01
IPCP Pro 350	IP Link Pro Control Proc., LL UI Upgrade	60-1417-01A



IPCP Pro 350DR

IP Link Pro Control Processor

- Supports TouchLink® Pro touchpanels and eBUS® button panels
- Supports secure industry standard communications protocols
- Supports LinkLicense®
- Two bidirectional RS-232 serial ports with software handshaking
- One bidirectional RS-232/RS-422/RS-485 serial port with hardware and software handshaking
- Securely mounts to an industry-standard DIN rail



IPCP Pro 355DR

IP Link Pro Control Processor

- Supports TouchLink® Pro touchpanels and eBUS® button panels
- AV LAN port allows AV devices to be isolated from the corporate network
- Supports secure industry standard communications protocols
- Supports LinkLicense®
- Two bidirectional RS-232 serial ports with software handshaking
- One bidirectional RS-232/RS-422/RS-485 serial port with hardware and software handshaking
- Securely mounts to an industry-standard DIN rail

Model	Version Description	Part Number
IPCP Pro 350DR	IP Link Pro Control Processor, DIN Rail	60-1430-01
IPCP Pro 350DR	IP Link Pro Control Proc., DIN Rail, LL UI Upgrade	60-1430-01A

Model	Version Description	Part Number
IPCP Pro 355DR	IP Link Pro Control Processor, DIN Rail	60-1433-01
IPCP Pro 355DR	IP Link Pro Control Proc., DIN Rail, LL UI Upgrade	60-1433-01A



IPCP Pro 255

IP Link Pro Control Processor

- Supports TouchLink® Pro touchpanels and eBUS® button panels
- AV LAN port allows AV devices to be isolated from the corporate network
- Supports secure industry standard communications protocols
- Supports LinkLicense®
- One bidirectional RS-232 serial port with software handshaking
- One bidirectional RS-232/RS-422/RS-485 serial port with hardware and software handshaking



IPCP Pro 250

IP Link Pro Control Processor

- Supports TouchLink® Pro touchpanels and eBUS® button panels
- Supports secure industry standard communications protocols
- Supports LinkLicense®
- Two bidirectional RS-232 serial ports with software handshaking
- One bidirectional RS-232/RS-422/RS-485 serial port with hardware and software handshaking

Model	Version Description	Part Number
IPCP Pro 255	IP Link Pro Control Processor	60-1431-01
IPCP Pro 255	IP Link Pro Control Proc., LL UI Upgrade	60-1431-01A

Model	Version Description	Part Number
IPCP Pro 250	IP Link Pro Control Processor	60-1429-01
IPCP Pro 250	IP Link Pro Control Proc., LL UI Upgrade	60-1429-01A

Switchers with Control Processors

DTP CrossPoint 4K Series

Seamless 4K Scaling Presentation Matrix Switchers

The Extron DTP CrossPoint® 4K Series matrix switchers deliver all of the technologically advanced capabilities you need for complete system integration. This includes a matrix switcher with 4K inputs and outputs, built-in independent scalers that are powered by Extron Vector™ 4K scaling technology and support seamless switching, integrated DTP® and XTP® signal extension, comprehensive audio DSP and AEC capabilities, a high performance mono or stereo amplifier, and an advanced control processor that is uniquely expandable.

Features

- All-in-one matrix switcher, scaler, audio DSP with AEC, audio power amplifier, and control processor
- Choose from 10x8, 8x6, 8x4, and 8x2 matrix switcher configurations
- Two DTP outputs feature mirrored HDMI connections to support local monitoring
- Compatible with DTP 230 Series and DTP 330 Series, plus XTP CrossPoint matrix switchers
- Available with integrated IPCP Pro 350 control processor:
 - Supports TouchLink Pro touchpanels and eBUS button panels
 - Supports LinkLicense
 - Integrated three port network switch



DTP CrossPoint 108 4K IPCP SA



DTP CrossPoint 86 4K IPCP SA



DTP CrossPoint 84 4K IPCP SA



DTP CrossPoint 82 4K IPCP SA

DTP CrossPoint 108 4K IPCP

10x8 Seamless 4K Scaling Presentation Matrix Switcher

Model	Version Description	Part Number
DTP CrossPoint 108 4K IPCP SA	2 x 50 Watt Stereo Power Amplifier	60-1381-12
DTP CrossPoint 108 4K IPCP SA	2 x 50 Watt Stereo Power Amplifier, LL UI Upgrade	60-1381-12A
DTP CrossPoint 108 4K IPCP MA 70	100 Watt 70 V Mono Power Amplifier	60-1381-13
DTP CrossPoint 108 4K IPCP MA 70	100 Watt 70 V Mono Power Amplifier, LL UI Upgrade	60-1381-13A

DTP CrossPoint 86 4K IPCP

8x6 Seamless 4K Scaling Presentation Matrix Switcher

Model	Version Description	Part Number
DTP CrossPoint 86 4K IPCP SA	2 x 50 Watt Stereo Power Amplifier	60-1382-12
DTP CrossPoint 86 4K IPCP SA	2 x 50 Watt Stereo Power Amplifier, LL UI Upgrade	60-1382-12A
DTP CrossPoint 86 4K IPCP MA 70	100 Watt 70 V Mono Power Amplifier	60-1382-13
DTP CrossPoint 86 4K IPCP MA 70	100 Watt 70 V Mono Power Amplifier, LL UI Upgrade	60-1382-13A

DTP CrossPoint 84 4K IPCP

8x4 Seamless 4K Scaling Presentation Matrix Switcher

Model	Version Description	Part Number
DTP CrossPoint 84 4K IPCP SA	2 x 50 Watt Stereo Power Amplifier	60-1515-12
DTP CrossPoint 84 4K IPCP SA	2 x 50 Watt Stereo Power Amplifier, LL UI Upgrade	60-1515-12A
DTP CrossPoint 84 4K IPCP MA 70	100 Watt 70 V Mono Power Amplifier	60-1515-13
DTP CrossPoint 84 4K IPCP MA 70	100 Watt 70 V Mono Power Amplifier, LL UI Upgrade	60-1515-13A

DTP CrossPoint 82 4K IPCP

8x2 Seamless 4K Scaling Presentation Matrix Switcher

Model	Version Description	Part Number
DTP CrossPoint 82 4K IPCP SA	2 x 50 Watt Stereo Power Amplifier	60-1583-12
DTP CrossPoint 82 4K IPCP SA	2 x 50 Watt Stereo Power Amplifier, LL UI Upgrade	60-1583-12A
DTP CrossPoint 82 4K IPCP MA 70	100 Watt 70 V Mono Power Amplifier	60-1583-13
DTP CrossPoint 82 4K IPCP MA 70	100 Watt 70 V Mono Power Amplifier, LL UI Upgrade	60-1583-13A

DTP CrossPoint 84 IPCP

8x4 Scaling Presentation Matrix Switchers with DTP Extension

- All-in-one 8x4 4K matrix switcher, scaler, audio DSP, audio power amplifier, and control processor
- Two DTP inputs and six HDMI inputs
- Two HDMI outputs and two independently scaled DTP outputs
- Integrated DTP inputs and outputs support transmission of video, control, and audio up to 330 feet (100 meters) over a shielded CATx cable
- Supports 4K signals at all inputs and on both HDMI outputs
- Available with integrated IPCP Pro 350 control processor:
 - Supports TouchLink Pro touchpanels and eBUS button panels
 - Supports secure industry standard communications protocols
 - Supports LinkLicense
 - Integrated three port network switch
 - Supports 10/100/1000Base-T
 - Supports Ethernet-controllable devices
 - Fully customizable using Extron control system software
 - Create controller groups
- HDMI audio embedding and de-embedding

Model	Version Description	Part Number
DTP CrossPoint 84 IPCP SA	2 x 50 Watt Stereo Power Amplifier	60-1368-12
DTP CrossPoint 84 IPCP SA	2 x 50 Watt Stereo Power Amplifier, LL UI Upgrade	60-1368-12A
DTP CrossPoint 84 IPCP MA 70	100 Watt 70 V Mono Power Amplifier	60-1368-13
DTP CrossPoint 84 IPCP MA 70	100 Watt 70 V Mono Power Amplifier, LL UI Upgrade	60-1368-13A



- Integrated audio digital signal processor with ProDSP™ 32/64-bit processing
- Audio input gain and attenuation
- Energy efficient Class D stereo or mono amplifier:
 - 2 x 50 watts @ 4 ohms; 2 x 25 watts @ 8 ohms
 - 1 x 100 watts @ 70 volts

IN1608 IPCP

Eight Input HDCP-Compliant Scaling Presentation Switcher with DTP Extension

- Integrates HDMI, analog video, and audio sources into presentation systems
- Two DTP inputs, four HDMI inputs, and two universal analog video inputs
- Three simultaneous video outputs
- Integrated DTP inputs and outputs support transmission of video, control, and analog audio over a shielded CATx cable
- Available with dedicated HDBaseT twisted pair output
- Available with integrated IPCP Pro 350 control processor:
 - Supports TouchLink Pro touchpanels and eBUS button panels
 - Supports secure industry standard communications protocols
 - Supports LinkLicense
 - Integrated three port network switch
 - Supports 10/100/1000Base-T
 - Supports Ethernet-controllable devices
 - Fully customizable using Extron control system software
 - Create controller groups

Model	Version Description	Part Number
IN1608 IPCP SA	Control Processor and Stereo Amp, DTP 330	60-1238-12
IN1608 IPCP SA	Control Proc, Stereo Amp, DTP 330, LL UI Upgrade	60-1238-12A
IN1608 IPCP MA 70	Control Processor and 70 V Mono Amp, DTP 330	60-1238-13
IN1608 IPCP MA 70	Control Proc, 70 V Amp, DTP 330, LL UI Upgrade	60-1238-13A



- Two mic/line inputs with 48 volt phantom power
- HDMI audio embedding and de-embedding
- Remote powering of DTP transmitters and receivers
- Key Minder® continuously verifies HDCP compliance for quick, reliable switching
- Energy efficient Class D stereo or mono amplifier:
 - 2 x 50 watts @ 4 ohms; 2 x 25 watts @ 8 ohms
 - 1 x 100 watts @ 70 volts

Model	Version Description	Part Number
IN1608 IPCP SA HDBT	Control Processor, Stereo Amp, HDBaseT Out	60-1238-75
IN1608 IPCP SA HDBT	Control Proc, Stereo Amp, HDBT Out, LL UI Upgrade	60-1238-75A
IN1608 IPCP MA 70 HDBT	Control Proc, 70 V Mono Amp, HDBaseT Out	60-1238-76
IN1608 IPCP MA 70 HDBT	Control Proc, 70 V Amp, HDBT Out, LL UI Upgrade	60-1238-76A

Mounting Kits

DWP 100 Series

Mounting Kits for Decorator-Style Modules

- Designed to mount in a one-, two-, or three-gang decorator-style products to a wall or other flat surface
- Accommodates one module per opening
- Includes wallplate and mud ring
- Available in black or white



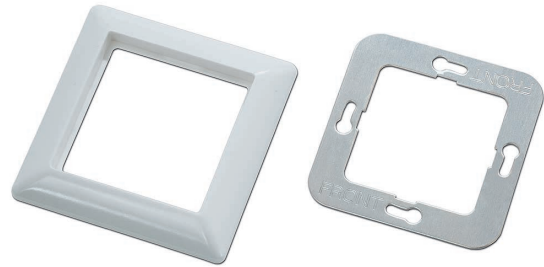
Model	Version Description	Part Number	Model	Version Description	Part Number
DWP 101	One-Gang, Black	70-1161-12	DWP 102	Two-Gang, White	70-1161-23
DWP 101	One-Gang, White	70-1161-13	DWP 103	Three-Gang, Black	70-1161-32
DWP 102	Two-Gang, Black	70-1161-22	DWP 103	Three-Gang, White	70-1161-33

Flex55 100 Mounting Kit Series

Mounting Kit for Flex55 Products

- Accommodates Extron Flex55 active and pass-through modules
- Designed to mount onto Flex55 products such as the EWB 212 external wall box
- Accommodates one Flex55 module per opening
- Available in a one- to four-gang frame
- Mounting hardware included
- Available in black or white

FLEX55

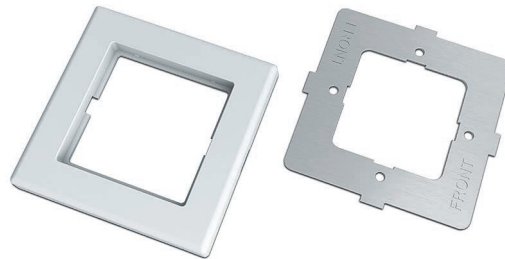


Model	Version Description	Part Number	Model	Version Description	Part Number
Flex55 101	1-gang Mounting Kit for Flex55 and EU Boxes, Black	70-1155-12	Flex55 103	3-gang Mounting Kit for Flex55 and EU Boxes, Black	70-1155-32
Flex55 101	1-gang Mounting Kit for Flex55 and EU Boxes, White	70-1155-13	Flex55 103	3-gang Mounting Kit for Flex55 and EU Boxes, White	70-1155-33
Flex55 102	2-gang Mounting Kit for Flex55 and EU Boxes, Black	70-1155-22	Flex55 104	4-gang Mounting Kit for Flex55 and EU Boxes, Black	70-1155-42
Flex55 102	2-gang Mounting Kit for Flex55 and EU Boxes, White	70-1155-23	Flex55 104	4-gang Mounting Kit for Flex55 and EU Boxes White	70-1155-43

MK 100 Mounting Kit Series

Mounting Kit for MK Junction Boxes and Enclosures

- Available in a one- and two-gang frames
- Designed to mount into MK junction boxes and enclosures for use in the UK, Middle East, Singapore, and the regions using MK-type enclosures
- Accommodates Extron 55mm modules
- Mounting hardware included
- Available in white



Model	Version Description	Part Number
MK 101	One-gang, white	70-897-13
MK 102	Two-gang, white	70-897-23

Accessories

EBDB

eBUS Distribution Hub

- Ten parallel eBUS ports provide a common connection point for multiple eBUS devices
- Front panel status LED indicates when power is present on one of the 10 eBUS distribution ports
- Compact plastic enclosure with ZipClip™ 200 mounting capability
- Compact, 1U enclosure can be easily mounted on a desk, in a podium, in a rack, or under furniture
- Mounts directly to Extron basic and universal rack shelf products or a variety of surfaces, including rack rails, tables, lecterns, projector poles, and table legs



Model	Version Description	Part Number
EBDB	10 eBUS Ports	60-1170-01

PS 1220EB

eBUS 12 VDC Power Supply and Distribution Hub

- Six parallel eBUS ports provide power and connections for multiple eBUS devices
- Energy-efficient 12 VDC, 24 watt power supply for low power consumption and reduced operating costs
- Plastic enclosure with ZipClip™ 200 mounting capability
- Compact, rack-mountable 1U, one-quarter rack width enclosure requires little desktop or rack space
- Mounts directly to Extron basic and universal rack shelf products or a variety of surfaces, including rack rails, tables, lecterns, projector poles, and table legs
- Extron designed and engineered for increased durability and reliability
- Universal IEC input easily accepts international power cords
- US style Edison 6-foot detachable IEC power cord included
- CE and UL listed
- Worldwide compatibility, 100 VAC to 240 VAC, 50/60 Hz

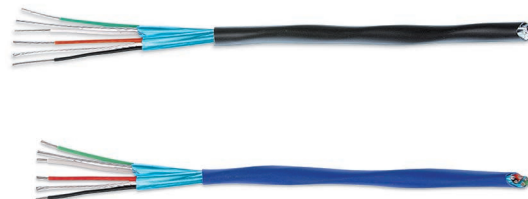


Model	Version Description	Part Number
PS 1220EB	Power and Six eBUS Ports	70-988-01

STP 20-2 Cable

Serial Control/Audio Cable

- Dual 20 AWG shielded twisted pairs with individual drain wires
- High performance cable for serial control/audio signals
- Plenum & Non-Plenum rated versions available
- SuperFlex jacket with sequential numbering
- RoHS compliant
- Spools of 1,000 feet (305 m) in self-dispensing box



Model	Version Description	Part Number
STP 20-2 Cable	Non-Plenum 1000' (305 m) spool	22-161-03
STP 20-2P Cable	Plenum 1000' (305 m) spool	22-163-03

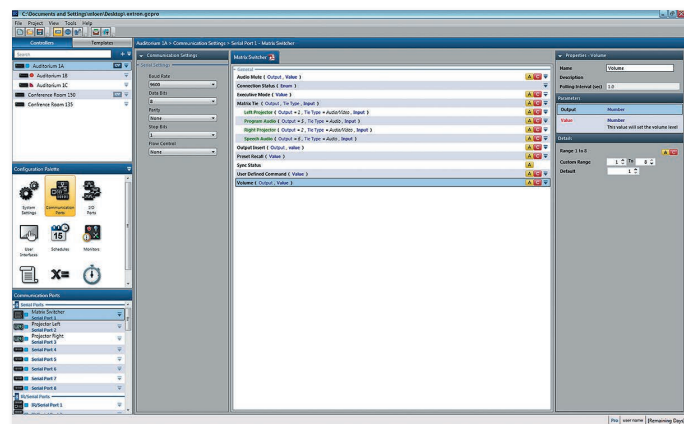
Software

GLOBAL CONFIGURATOR PLUS AND GLOBAL CONFIGURATOR PROFESSIONAL

Global Configurator® is Extron's most powerful and versatile control system configuration software. It is designed to be used exclusively with Extron Pro Series Control products, including eBUS button panels, TouchLink Pro touchpanels, IP Link Pro control processors and MediaLink Plus controllers. Powerful features, such as conditional logic, variables, and macros provide greater flexibility for more elaborate control system designs. Global Configurator has two modes. Global Configurator Plus is ideal for smaller applications requiring one control processor and one control interface. Global Configurator Professional is suited for applications requiring multiple control processors, enhanced functionality, and advanced configuration. Access to Global Configurator Professional requires an individual to successfully complete ECP Certification.

Features

- ▶ **Designed to be used exclusively with Extron Pro Series control systems**
- ▶ **Conditional logic** – Allows control operations to be contingent on a variety of separate conditions



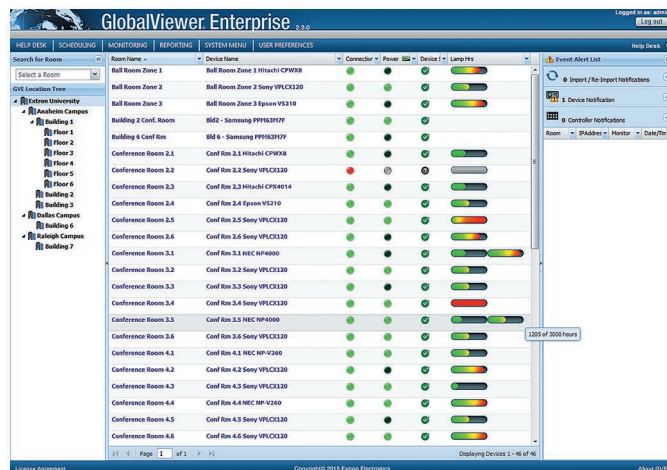
- ▶ **Local variables** – Allows the user to emulate external feedback within the project
- ▶ **Supports systems using GlobalViewer Enterprise**
- ▶ **Create controller groups (Accessible from Global Configurator Professional mode only)**
- ▶ **Controller Swap** – Allows an already configured control processor to be changed to a different model
- ▶ **Library of enhanced Extron Certified device drivers**

GLOBALVIEWER ENTERPRISE

GlobalViewer® Enterprise - GVE software simplifies AV system resource management with intuitive control for hundreds of common AV tasks. Whether you're working with 5 or 5000 rooms, GVE provides a powerful, flexible way to manage, monitor, and control Extron and third-party AV devices over a standard network. Support teams will appreciate the agility and flexibility GVE provides to access usage data, create reports, and control the system from any computer on the network. The Help Desk view offers a look at the entire enterprise in a single window and access to detailed room data and control with just a click of a mouse.

Features

- ▶ **Easily manages all of the AV devices and meeting rooms across the campus and enterprise**
- ▶ **Track and analyze device and room usage, proactively plan maintenance activities, and maintain inventory lists using customizable reports**
- ▶ **Custom reporting tools** – Customize GVE data views from each room and device by displaying specific alerts, schedules, monitors, logs, or calendar events from within common web applications you already use.
- ▶ **Extron GlobalViewer Enterprise Commissioning with every installation ensures a trouble-free system installation and optimal performance**



- ▶ **Enhanced monitors and schedules based on location and device type**
- ▶ **Manage individual rooms using the room control terminal directly from the help desk**
- ▶ **Supports many common Web browsers** – GVE is installed on a Windows server and is accessible from anywhere on the network using Internet Explorer®, Firefox®, Safari®, and Google Chrome®

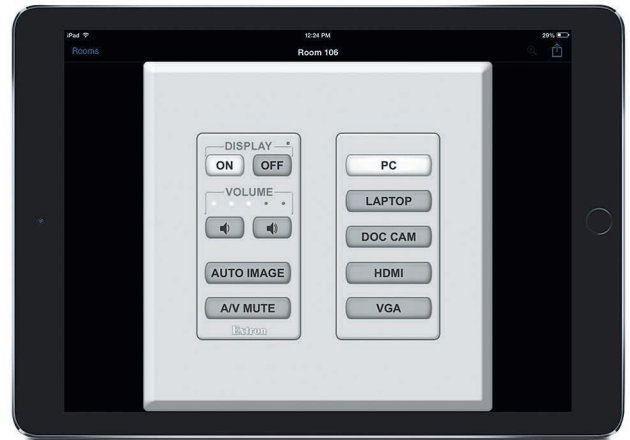
EXTRON CONTROL

Control App for TouchLink, eBUS, and MediaLink

Extron Control is an easy-to-use AV control system app that gives users complete access to Extron control systems directly from Apple iOS or Android devices. After a quick initial setup, your device connects to the desired room, allowing a seamless, highly-responsive control experience. Extron Control automatically loads the user interfaces present on any Extron control product without a lengthy setup and customization process. The familiar interfaces emulate the TouchLink touchpanel, eBUS button panel, or MediaLink controller in your room, and all button presses are kept in sync between the app and your Extron control devices. Extron Control is available for immediate download from the iTunes App Store and Google Play.

Features

- ▶ Provides a convenient point of control for Extron control systems using your Apple iOS or Android devices
- ▶ Extron Control for iOS supports all TouchLink, TouchLink Pro touchpanels, eBUS button panels, and Ethernet-enabled MediaLink, MediaLink Plus controllers
- ▶ Extron Control for Android supports all TouchLink Pro touchpanels, eBUS button panels, and all MediaLink Plus controllers
- ▶ Familiar user interface provides the same experience as the touchpanel, button panel, or controller
- ▶ Supports Extron LinkLicense
- ▶ Room Manager allows users to easily add control products and customize room lists

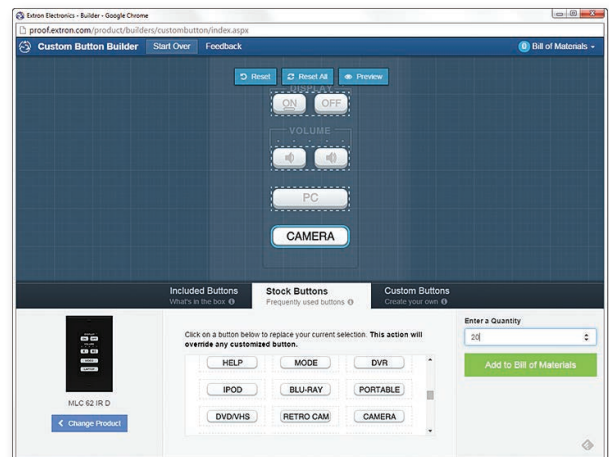


CUSTOM BUTTON BUILDER

The Extron Custom Button Builder enables convenient and simple customization of soft-touch, backlit buttons for a variety of Extron control products. This dynamic online tool allows individual button customization as well as graphical representations of whole product button layouts with many options for easy edits. The sign-off page provides a detailed order summary as well as graphical representations of all buttons ordered.

Features

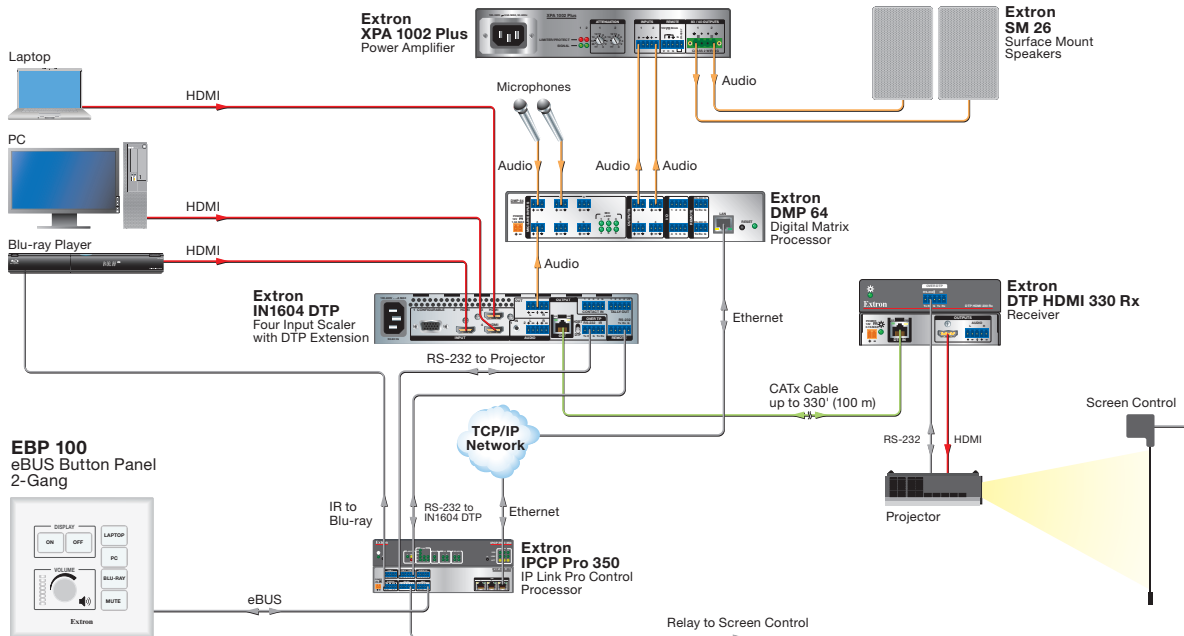
- ▶ Customize text for individual buttons or entire products
- ▶ Easily change text for single or dual line buttons while adjusting font size and monitoring character count
- ▶ Choose from a wide variety of symbols, and mix and match symbols and text
- ▶ A running Bill of Materials keeps track of all buttons and generates a part number for easy reordering
- ▶ When finished, the sign-off page provides order details, part number, and graphical representations of the customized buttons



Application Diagrams

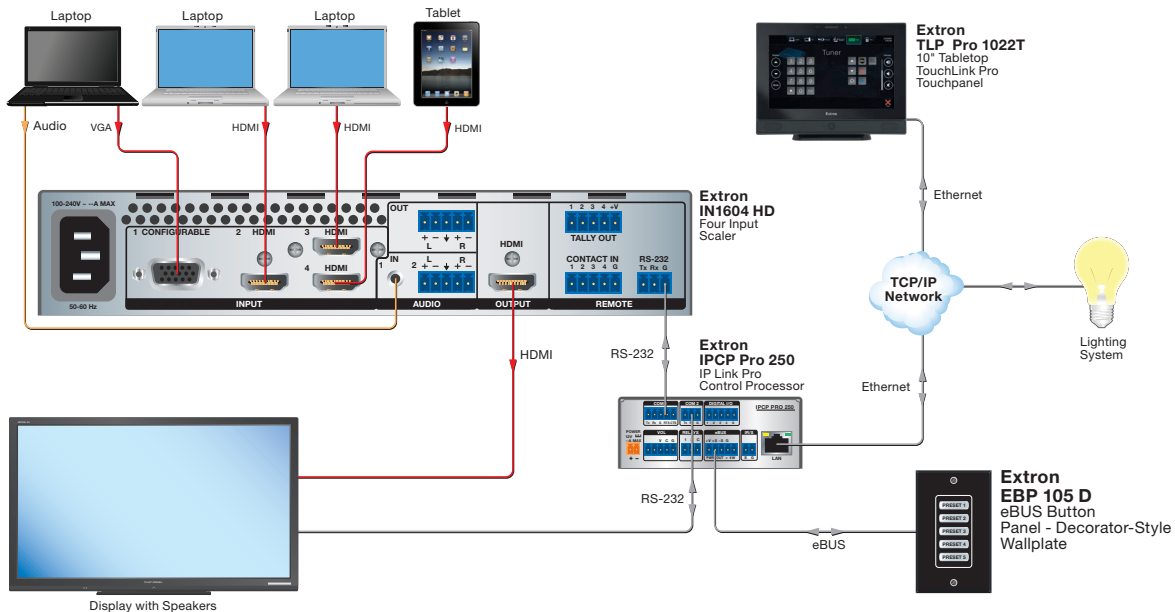
EBP 100

In this presentation environment, an EBP 100 eBUS Button Panel connects to the eBUS port on an IPCP Pro 350 Control Processor providing control for projector power, volume, and source selection.



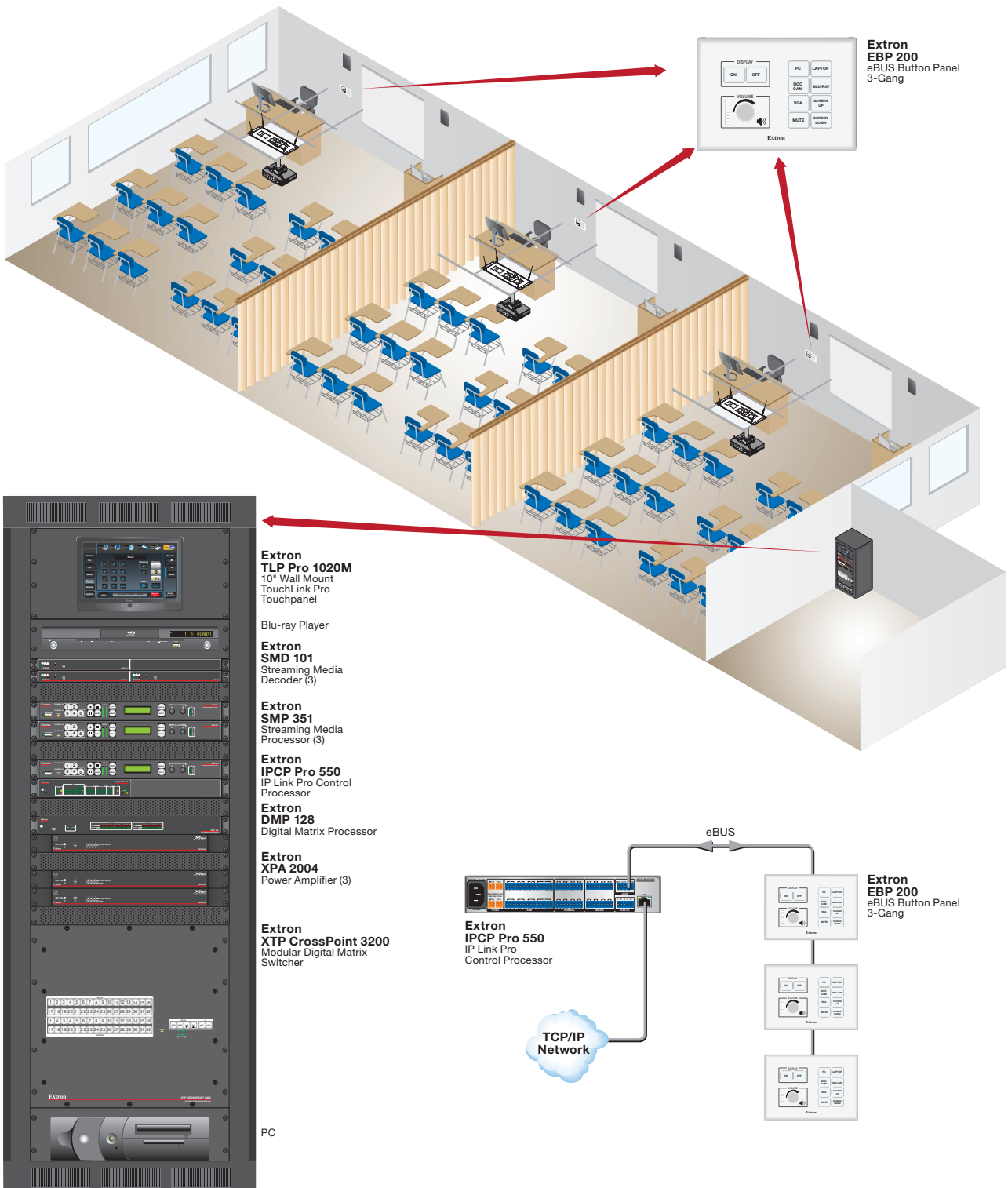
EBP 105 D

In this application, the EBP 105 D Button Panel is used for lighting control, while the TouchLink Pro touchpanel is used for AV system control. The buttons have been modified and ordered with the Extron Custom Button Builder to fit the application, as needed. The eBUS button panel and touchpanel both connect to the same control processor.



EBP 200

In this divisible room application, three EBP 200 Button Panels are connected in a daisy chain off the eBUS port on an IPCP Pro 550 Control Processor and are used to control a variety of AV system functions. When the space is divided into individual rooms, each button panel is used to control the AV in its own room. When the rooms are combined, any one of the three button panels can be used to control the entire space, and all three button panels mirror each other.



Specifications

EBUS CONTROL INTERFACE	
eBUS control ports	(2) 3.5 mm captive screw connectors, 4 pole
eBUS pin configuration	+V = +12 VDC; +S = + signal; -S = - signal; G = ground
Recommended cable type	Extron STP20-2/1000 or STP20-2P/1000 cable
Maximum system cable length	1000 feet (305 meters) sum total for the eBUS system, regardless of topology. Power injection may be required depending on system cabling topology and primary power supply wattage. See the eBUS Technical Reference Guide or setup guides for details.
SOFTWARE AND CONTROL OPTIONS	
Configuration software	Extron Global Configurator® Plus and Professional
Programming software	Global Scriptor®
Program control	Extron Control
Utilities	Toolbelt
GENERAL	
Power	Power is supplied by an eBUS enabled control processor or optional power supply
eBUS power consumption	
EBP 100, EBP 200	0.5 watt, 12 VDC
EBP 105 D/EU/MK, EBP 106 D/EU/MK	1.5 watts, 12 VDC
EBP 105P EU, EBP 105P MK, EBP 106P D	1.5 watts, 12 VDC
EBP 108 D/EU/MK	1.5 watts, 12 VDC
EBP 110 D/EU/MK	1.5 watts, 12 VDC
EBP 111 D	2.5 watts, 12 VDC
EBP NAV D/EU/MK	1.5 watts, 12 VDC
EBP VC1 D/EU/MK	1.5 watts, 12 VDC
EBP VC2 D/EU/MK	1.5 watts, 12 VDC
EBP 1200C	2.0 watts, 12 VDC
Temperature/humidity	Storage: -40 to +158 °F (-40 to +70 °C) / 10% to 90%, noncondensing Operating: +32 to +122 °F (0 to +50 °C) / 10% to 90%, noncondensing
Cooling	Convection, no vents
Thermal dissipation	
EBP 100, EBP 200	1.2 BTU/hr
EBP 105 D	4.2 BTU/hr
EBP 105 EU/MK	4.1 BTU/hr
EBP 106 D/EU/MK	5.0 BTU/hr
EBP 105P EU, EBP 105P MK	4.1 BTU/hr
EBP 106P D	5.0 BTU/hr
EBP 108 D/EU/MK	5.0 BTU/hrTBD
EBP 110 D/EU/MK	4.2 BTU/hr
EBP 111 D	8.0 BTU/hr
EBP NAV D/EU/MK	5.0 BTU/hr
EBP VC1 D/EU/MK	4.2 BTU/hr
EBP VC2 D/EU/MK	4.2 BTU/hr
EBP 1200C	6.3 BTU/hr

Mounting	
Rack mount	No
Furniture or wall mount	
Decorator-style models	Yes, in a standard US 1-gang electrical junction box or mud ring (except EBP 111 D).
EBP 111 D	Yes, in a standard US 2-gang electrical junction box or mud ring.
EBP 100	Yes, in a standard US 2-gang electrical junction box or mud ring
EBP 200	Yes, in a standard US 3-gang electrical junction box or mud ring
EU models	Yes, in a standard 1-gang EU electrical junction box.
MK models	Yes, in a standard 1-gang MK electrical junction box
EBP 1200C	Furniture mount: min/max table thickness 0.5" to 2.5" (12.7 to 63.5 mm)
Enclosure type	
All models except EBP 1200C	Plastic faceplate, metal mounting plate
EBP 1200C	Metal
EBP 1200C	
Top plate (outer rim)	10.57" W x 4.58" D (268.5 mm W x 116.4 mm D)
Surface cutout (inside rim)	10.00" W x 4.00" D (254.0 mm W x 101.6 mm D)
Enclosure depth	
4.46" H (113.3 mm H)	
Product weight	
EBP 100	0.5 lb (0.2 kg)
EBP 200	0.7 lb (0.3 kg)
Decorator-style models	0.2 lb (0.1 kg) (except EBP 111 D)
EBP 111 D	0.3 lb (0.1 kg)
EU and MK models	0.2 lb (0.1 kg)
EBP 1200C	2.3 lb (1.0 kg)
Vibration	ISTA 1A in carton (International Safe Transit Association)
Regulatory compliance	
Safety	CE, c-UL*, UL*
EMI/EMC	CE, C-tick, FCC Class A, ICES, VCCI class A
Environmental	Complies with the appropriate requirements of RoHS, WEEE
Accessibility	Complies with the appropriate requirements of Section 508 of the Rehabilitation Act (29 U.S.C. 794d).
Warranty	3 years parts and labor
NOTE: *The UL listing for the EBP 1200C is only valid when the Cable Cubby contains the optional Extron US AC power module.	
NOTE: All nominal levels are at ±10%.	

For complete specifications, please go to www.extron.com
Specifications are subject to change without notice.

WORLDWIDE SALES OFFICES

Anaheim • Raleigh • Silicon Valley • Dallas • New York • Washington, DC • Toronto • Mexico City • Paris • London • Frankfurt
Madrid • Stockholm • Amersfoort • Moscow • Dubai • Johannesburg • Tel Aviv • Sydney • Melbourne
New Delhi • Bangalore • Singapore • Seoul • Shanghai • Beijing • Hong Kong • Tokyo

www.extron.com